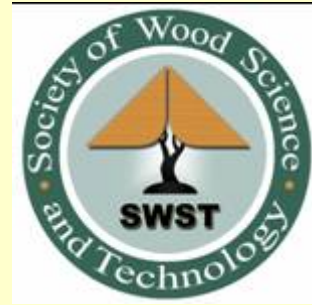


SWST Newsletter

~ December 2006 ~



Inside this issue (these are clickable links)

News

Analytical Tools Symposium
Call for Participants
Call for Posters
Report from AWI Skills Summit
SWST-sponsored session at IUFRO
SWST Visiting Scientist Program
Market Demand Study for Termite Resistant Structural Panels
Call for Posters for Pole Conference
Encyclopedia of Earth Seeks Contributions

Events

Lean Manufacturing Workshop
Innovation and Technology Meeting
Wood Modification Conference
Small Log Conference
Woody Biomass Conference

Publications

Outlook on China's Wood Industry

Principles of Wood Science and Technology

Positions

Assis./Assoc. Prof Manufacturing Systems - Virginia Tech
Assis./Assoc. Prof Forest Operations - University of Idaho
Electron Microscopist - SUNY
PhD student – Vienna
Project Manager in Pulp & Paper Industry
Value-Added Wood Products Extension Associate -LSU AgCenter
Assis. Prof.Development of Engineered Wood Products from Decommissioned Preservative-Treated Wood-LSU AgCenter
Postdoc in Fibre-Based Composites – Forintek East

SWST

Notes from the Fall Board Meeting
SWST Snapshot
About SWST
Wood & Fiber Science Report
Visiting Scientist List

Notes from the Editor



The SWST is requesting nominations for the **SWST Distinguished Service Award** and **SWST Fellows**. The Distinguished Service Award is given in recognition of distinguished service to the profession as a whole. The SWST Fellow Award recognizes significant contributions to the wood science and technology profession and service to the Society by SWST members. Visit <http://www.swst.org/awards.html> for more information.

Please send your comments, and content for future editions of the Newsletter, to me at AdamTaylor@utk.edu. The next edition will come out in mid-February, 2007.

SYMPOSIUM ON ADVANCED ANALYTICAL TOOLS

The 2007 Annual Convention program will feature a symposium on Advanced Analytical Tools. Dr. Tim Rials of the University of Tennessee – Knoxville and Dr. Steve Kelley of North Carolina State University are putting together the program for a full day technical session. According to Rials, "This symposia topic was selected in an effort to take advantage of synergies between the standard SWST program, and the geographic proximity to the US DOE's Oak Ridge National Laboratory and the SWST co-sponsored Nanotechnology meeting the end of the week. The topic was also selected to help highlight innovative tools that are commonly used by other scientific communities, e.g., macromolecular sciences, nanotechnology, biochemistry, imaging, data analysis and process control, but not commonly used by the wood or biomass community. This symposium will involve a series of tutorials. The tutorials will last between 30 and 40 minutes. Each tutorial will introduce to the basic concepts, provide an overview of how the tool has been used by other disciplines and highlight how the tool has been applied to wood science."

Concurrently, SWST will run a technical forum on Advanced Analytical Tools featuring exhibits by equipment manufacturers and posters submitted by SWST members. We ask that members please distribute the following advance registration forms to representatives of equipment vendors that they are acquainted with or submit the name and e-mail address of vendors to Jim Armstrong at <jarmstro@wvu.edu> or Jerry Winandy at <jwinandy@fs.fed.us>.

[<Back>](#)

**TECHNICAL FORUM
OF
ANALYTICAL EQUIPMENT MANUFACTURERS AND DISTRIBUTORS**

CALL FOR PARTICIPANTS

June 10, 2007
Time TBA
Hilton Hotel/Knoxville Convention Center
Knoxville, Tennessee

To run concurrently with a technical session on
Advanced Analytical Tools
Annual Convention of the
Society of Wood Science and Technology

Cost to Participants:
\$320 (For table and one individual registration);
\$160 for each individual person

Please reply to:
Ms. Victoria Herian
Society of Wood Science and Technology
One Gifford Pinchot Drive
Madison, WI 53726-2398

Phone: (608) 231-9347
Fax: (608) 231-9592
Email: vicki@swst.org

Exhibitor Name(s): _____

Title: _____

Affiliation: _____

Mailing Address: _____

Telephone: _____

E-mail: _____

[<Back>](#)

SWST TECHNICAL FORUM

**APPLICATIONS OF ADVANCED ANALYTICAL TOOLS TO
LIGNOCELLULOSIC MATERIALS SCIENCE**

CALL FOR POSTERS

June 10, 2007

Time TBA

Hilton Hotel/Knoxville Convention Center

Knoxville, Tennessee

**To run concurrently with a technical session on
Advanced Analytical Tools**

**Annual Convention of the
Society of Wood Science and Technology**

Please reply to:

Ms. Victoria Herian

Society of Wood Science and Technology

One Gifford Pinchot Drive

Madison, WI 53726-2398

Phone: (608) 231-9347

Fax: (608) 231-9592

Email: vicki@swst.org

Title of Poster: _____

Presenter Name(s): _____

Title: _____

Affiliation: _____

Mailing Address: _____

Telephone: _____

E-mail: _____

[<Back>](#)

REPORT FROM ARCHITECTURAL WOODWORK INSTITUTE'S SKILLS SUMMIT

Jim Armstrong represented SWST at the Architectural Woodwork Institute's Skills Summit on June 30 in Sterling, Virginia. AWI received a seed grant from the Forest Service to develop skills standards for manufacturing in the wood products industry. A meeting held in November 2005 led to development of a draft strategic plan for standards development. The proposed standards would certify skill levels of skilled laborers - Machine operators, finishers, installers, etc. - and would be similar to the NIMS Standards of the National Institute for Metalworking Skills.

The meeting in June focused on the organization and structure of a 501c3 to develop, oversee, and administer the standards. The organization will be led by a board of directors representing pertinent trade organizations - AWI, WWMA, WMIA, AWMAC, WCMA, etc. The board would appoint three-person committees to develop each standard. At this point, the issues of training, evaluation, and certification are unresolved. The biggest hurdle will be funding and no one seemed to have a handle on how to surmount the funding issue. There is great interest in this initiative from technical and 2-year schools. Trade associations were represented and will need to buy into the skills standards concept for it to be successful.

There are several questions of interest to SWST members that may arise from the AWI effort:

- * How can 4-year WST programs better prepare their graduates to train and supervise skilled workers?
- * Should skills standards be an ingredient in wood machining courses at 4-year institutions?
- * Will extension and outreach programs have a role in training workers under the skills standards?
- * Will there be research opportunities developing from the standards?
- * Are there opportunities to better network with two-year and technical programs?
- * Do SWST members have a role in developing standards?
- * Will a certification program be useful to our educational and research labs hiring technical support personnel?

The Revised Skill Standards Conceptual Framework from the AWI Skills Standards Summit is posted on the web at <http://www.djcase.com/skillstandards/results.htm>.

[<Back>](#)

EDUCATION IN WOOD SCIENCE AND TECHNOLOGY SESSION AT IUFRO

SWST is jointly sponsoring a Technical Session on "Education in Wood Science and Technology" at the upcoming IUFRO All Division 5 Conference in Taipei. See the link below for all information. We hope to see you there!

2007 IUFRO All Division 5 Conference will be held in Taipei from October 29th through November 2nd, 2007. All the information of registration, assistance programs application, the tentative conference program, keynote address, presentations, tours, accommodation, and local information is on the conference website at <http://www.alldiv5iufro2007.org.tw/index.htm>.

If you have any questions about the conference, please contact

Susan Shiau
Chief Coordinator of 2007 IUFRO All D5 Conference, Taipei
53 Nan-hai Road, Taipei 10066, Taiwan
E-mail: iufro2007@gmail.com; susanshiau@tfri.gov.tw
Tel: +886 2 2314 7905
Fax: +886 2 2389 0318

[<Back>](#)

SWST VISITING SCIENTIST PROGRAM

The SWST Visiting Scientist Program committee reminds you that International travel grant proposals for year 2007 are due to Vicki Herian at SWST office by January 15, 2007. The guidelines for applying the international grants can be found at: <http://www.swst.org/vspguide.html>. One important venue in 2007 might be the IUFRO meeting in Taipei in October 2007 with side trips to other institutions in Asia.

Also, you are invited to submit the proposals for North American visits to any Canadian or US forest products institute, university, or corporation. Application details can be found on the SWST website: <http://www.swst.org/vsp.html>

A list of the [potential visiting scientists](#) can be found at the end of this newsletter.
Thanks !

Dr. Jilei Zhang
Associate Professor
Box 9820 Department of Forest Products
Mississippi State, MS 39762-9820
Franklin Center, Room #218
Phone: 662-325-9413
Fax: 662-325-8126
Email: jzhang@cfr.msstate.edu

[<Back>](#)

MULTI-CLIENT STUDY: MARKET DEMAND FOR TERMITE RESISTANT STRUCTURAL PANELS IN NEW HOME CONSTRUCTION

The Louisiana Forest Products Development Center, an internationally recognized wood products research and development center, is soliciting partners to participate in a new Multi-Client Study: Market Demand for Termite Resistant Structural Panels in New Home Construction. The study will examine major issues that U.S. homeowners and home builders consider in evaluating whether to purchase or build homes that are built with termite resistant structural panels. By understanding their perceptions, attitudes and willingness-to-pay, your company will be better positioned to gauge potential participation in this arena. Study participants will have the opportunity to provide questions for the survey & also have proprietary access to the study results for 9 months before public dissemination.

Sponsorship Fee: \$2,000 before December 1, 2006; \$2,300 after December 1, 2006. To receive a copy of the study proposal or for more information contact:

Dr. Richard Vlosky, Director & Professor, Louisiana Forest Products Development Center, 227 School of Renewable Natural Resources, Louisiana State University Agricultural Center, Baton Rouge, LA 70803.
Phone: (225) 578-4527; email: rvlosky@agcenter.lsu.edu

[<Back>](#)

CALL FOR POSTERS 2007 SOUTHEASTERN UTILITY POLE CONFERENCE & TRADE SHOW

You are cordially invited to submit an abstract for a Technical Forum Presentation (poster) at the 2007 Southeastern Utility Pole Conference & Trade Show, February 11-13, 2007. Any topic related to poles, their preservation, production or use, or research in progress, is sought. Authors will have the choice of providing an abstract, an expanded summary, or a full paper for inclusion in the conference proceedings. Details for the poster will be sent to authors of qualifying papers.

Send your title & abstract to:

Dr. Todd Shupe
Professor, School of Renewable Natural Resources
227 Forestry, Wildlife, & Fisheries Building
Louisiana State University
Baton Rouge, LA 70803-6202
E-mail: Tshupe@agctr.lsu.edu
Fax: (225) 578-4251
Deadline is January 15, 2007

More information on the conference can be found at this link: <http://www.southeasternpoleconference.org/>

[<Back>](#)

CONTRIBUTE TO THE ENCYCLOPEDIA OF EARTH

We invite to become a contributor to the Encyclopedia of Earth (EoE).

The EoE is a comprehensive source of all information related to the environment, emphasizing the interactions between the Earth and society. The EoE is created by a community of approved experts and is intended to aid the general public in obtaining trustworthy information regarding the issues and sciences surrounding the environment.

The public site was launched in September 2006 with the help of 309 Authors and 132 Topic Editors. As the Encyclopedia continues to grow, we are asking you to join our community of experts.

If you would like to know more information about possible roles in the EoE, please contact: Alejandra Roman; aoe@earthportal.net; Phone: 202-207-0015 If you would like more information on the Encyclopedia of Earth please view: <http://www.eoearth.org/eoe/about>

You may also fill-out and submit a Contributor Form online at:
<http://www.eoearth.org/eoe/contribute>

[<Back>](#)

LEAN MANUFACTURING WORKSHOP FOR THE WOOD PRODUCTS INDUSTRY

Bayport Public Library
Bayport, Minnesota
December 11-13, 2006

This 3-day workshop will bring the latest in Lean Manufacturing technologies to managers in wood products businesses. Workshop activities and lessons will help you identify target opportunity areas in your business for improvement, provide a step-by-step guide for the implementation of “lean systems”, and direct the organization toward a philosophy of continuous improvement needed for today’s increasing competition. See how to use lean tools to improve quality and increase on-time shipments while reducing manufacturing cycle time, labor input, work in process, and required floor space. This workshop demonstrates lean production concepts using hands-on learning simulations and the latest industry examples applied to primary and secondary wood products manufacturers. We will tour Anderson Windows, a local wood products manufacturer who has successfully adopted the lean philosophy to improve their operations. The workshop is co-sponsored by the Virginia Tech’s Sloan Foundation Forest Industries Center, University of Minnesota Duluth’s Natural Resources Research Institute, and the USDA Forest Service’s Wood Education and Resource Center.

The 3 day workshop fee is \$625 which covers registration, instructional materials, continental breakfasts, coffee breaks, lunch, and dinner on December 12. Your registration should be received no later than December 4, 2006. Register early because registrations are limited to the first 20 applicants.

For online registration information and program details, please visit <http://www.forestindustries.vt.edu/workshop.html> or contact:

Earl Kline
Virginia Tech
Blacksburg, VA 24061-0323
540-231-8841
kline@vt.edu
www.forestindustries.vt.edu/workshop.html

[<Back>](#)

INNOVATION AND TECHNOLOGY IN THE PRIMARY AND SECONDARY FOREST PRODUCTS INDUSTRIES

The Annual Meeting of the Mid-South Section of the Forest Products Society will take place January 17th and 18th at the Peabody Hotel in Memphis, Tennessee.

For more information, visit <http://web.utk.edu/~mtaylo29/files/FPSMS2007.pdf>

or contact Tim Young
865.946.1119
tmyoung1@utk.edu

[<Back>](#)

WOOD MODIFICATION CONFERENCE

Please visit the website of ECWM3 (<http://www.ecwm3.com/>), the only international conference dedicated to all wood modification technologies. The next conference will be held at the Angel Hotel in Cardiff, Wales UK on October 15 and 16th 2007.....

[<Back>](#)

SMALL LOG CONFERENCE

Coeur d'Alene, Idaho ~ March 28-30, 2007
www.forestnet.com/slc/

[<Back>](#)

WOODY BIOMASS CONFERENCE

Las Vegas, Nevada ~ November 2, 2006
www.smallwoodnews.com/phpBB2/viewtopic.php?t=108

[<Back>](#)

OUTLOOKS ON CHINA'S WOOD PRODUCTS AND WOOD FIBER INDUSTRIES

RISI, the leading information provider for the global forest products industry, today announced the upcoming publication of two new studies focusing on China's wood products and wood fiber industries. These studies will provide background information and detailed end-use forecasts on the wood products and wood fiber markets in China. They will help producers, end users of wood products and wood fiber, and financial analysts to better understand what China's impact will be on their businesses.

Bernard Fuller, RISI vice president wood products, commented, "Over the past decade China has become the fastest growing consumer of lumber and panel products while their domestic supply of wood fiber has steadily declined. These trends will create new opportunities for organizations that have a clear understanding of the Chinese wood products and wood fiber markets. These new studies will be a valuable tool for assessing the potential effects China could create on the North American and European markets."

The first study, China's Rapidly Expanding Wood Products Markets, features:

- * A review of China's forest products industry's responses to massive and rapid economic growth
- * Forecast and analysis of China's wood products demand indicators (e.g. residential construction and furniture production)
- * Forecast trends for China wood products costs and prices
- * An evaluation of risks in China's wood products markets

The companion study, China's Growing Wood Fiber Deficit, includes:

- * A comprehensive outlook on the status of China's wood fiber industry
- * Analysis of China's efforts to expand its forest plantation base and increase self-sufficiency
- * Background information on how the Chinese market has been operating and how this potentially could affect North American and European Markets
- * Insight into potential investment and timberland acquisition opportunities for North American and European organizations

RISI senior vice-president of analytical and editorial products, Keith Balter, stated, "China has historically been a challenging region from which to obtain quality data . In order to provide our clients with the most accurate information available, we opened an office in Shanghai earlier this year, staffed with several analysts who are native speakers and have experience and contacts in the Chinese forest products industry. In addition, clients purchasing these studies will benefit from RISI's time-tested forecasting models that dynamically link the data throughout all our industry forecasts and reflect the effects of developments in related markets."

Both studies are slated for publication in December 2006. Complete prospectuses can be found at <http://www.responsetrack.net/lnk/risiinfo779093/?12WJE008BDU>.

About RISI

RISI is the leading information provider for the global forest products industry. The company works with clients in the pulp and paper, wood products, tissue and nonwovens industries to help them make better decisions.

Headquartered in Bedford, Massachusetts, RISI operates offices in Brussels, Belgium; Atlanta, Georgia; San Francisco, California; Portland, Oregon; São Paulo, Brazil; Shanghai, China; Singapore; and Charlottesville, Virginia. More information can be found at

<http://www.risiinfo.com/corporate/do/welcome;jsessionid=77BF7A41BB3EBED6AF9944B1F7AA104D>

Contact:

Jen Rahall

Associate Marketing Manager

RISI

4 Alfred Circle, Bedford MA 01730 U.S.A.

Tel: +1.781.734.8949

jrahall@risiinfo.com

[<Back>](#)

PRINCIPLES OF WOOD SCIENCE AND TECHNOLOGY

The book "Principles of Wood Science and Technology, I, Solid Wood" by Franz F. P. Kollmann & W.A. Côté, first published in 1967 has been reprinted and is available through CBLs Publishing. You can order through their website www.cbls.com

Additional ordering information:

List Price \$95
Discount Price \$85
Educational Price \$65

CBLs
119 Brentwood Street
Marietta, OH 45750
Tel: 740-374-9458
Fax: 740-374-8029

Email: cbls@cbls.com
Website: www.cbls.com

[<Back>](#)

ASSISTANT/ASSOCIATE PROFESSOR – MANUFACTURING SYSTEMS VIRGINIA TECH

The Department of Wood Science and Forest Products at Virginia Tech is seeking applications for the position of assistant/associate professor in the area of manufacturing systems. Virginia Tech has strong academic programs in wood science, marketing, business & operations management, and industrial engineering as related to this position. We seek a candidate who would develop and apply systems engineering innovations to effectively interface across our existing programs to support domestically competitive and sustainable wood products manufacturing businesses for the future.

POSITION DESCRIPTION: The tenure-track position will be at the Assistant/Associate Professor level and will be a calendar year appointment. The position will have responsibilities in extension programming and industry outreach (75%) and teaching/research (25%). The successful candidate is expected to work with the Virginia forest products industry and support programming focused on competitiveness of the industry. In addition, responsibilities will include development, delivery, and provider of educational programs and training of Cooperative Extension agents to address manufacturing competitiveness needs of the industry and as might be supported through actions of the Cooperative Extension network of Specialists and Agents. The successful candidate will develop an internationally recognized extension and research program in manufacturing systems as related to the wood processing sector, that could include focus areas such as (but not limited to) lean/high-performance manufacturing, rapid prototyping technologies, statistical process control, Six-Sigma, business management, logistics, and supply chain management. Teaching responsibilities will initially include one undergraduate course in secondary processing. The successful candidate will also become a core faculty member of the new 'Student Manufacturing Enterprise Initiative' in the department. The Manufacturing Enterprise Initiative is envisioned to become a real-world experiential learning environment for students that focuses on bringing a product to the marketplace. There will be extension, outreach, teaching and research opportunities in collaboration with the Wood-Based Composites Center, the Sustainable Engineered Materials Institute, the Center for Forest Products Marketing and Management,

the Center for Unit Load Design, the Sloan Forest Industries Center at Virginia Tech and in other colleges and academic units on the Virginia Tech campus. The position provides excellent opportunities to develop a strong interdisciplinary program with other researchers in the department and on the Virginia Tech campus. The successful candidate will be expected to work directly with the Virginia forest products manufacturing sector, obtain extramural funding, publish in refereed journals, participate in local, regional and national meetings of professional societies, serve as major professor for graduate students, and serve on graduate committees. Cooperation and collaboration with other scientists in the department and across our campus is expected. We seek to seamlessly integrate a leading manufacturing extension effort with contemporary research and undergraduate and graduate education. The successful candidate will have opportunities and expectations to work collaboratively with other Specialists in the department, and other faculty engaged in leading manufacturing and business management activities. The position reports administratively to the Head of the department.

QUALIFICATIONS: Candidates will have a Ph.D. in wood science, biological systems engineering, industrial and systems engineering, management, statistics, or closely allied fields, with demonstrated experience and/or expressed interest in manufacturing systems addressing the forest industries sector. Candidates nearing degree completion will be considered given that degree completion is a requirement for continued employment once hired. The successful candidate must be able to communicate effectively with people at all levels in university, industry and private sectors. Candidates at the Associate Professor level must have a demonstrated track record of success in extension or research, including the ability to articulate a coherent extension and/or research agenda and to identify potential funding sources to support such activities.

PREFERRED QUALIFICATIONS: In addition to the above required qualifications, the candidate would have history of collaboration with colleagues on and off campus, experience reaching out to business, industry and government agencies and ability to be a good departmental, college, and university citizen; collegiality.

APPLICATION: Application materials should include a current vitae, official transcripts for all degrees at all institutions, the names, addresses, phone numbers and email addresses of five professional references. The applicant should address his or her interest in the position by preparing a written statement of interest that addresses the matching of personal skills and education with the position description. All materials must be submitted electronically with exception of official transcripts, which must be mailed. Submit on-line at www.jobs.vt.edu, referring to posting No. 061340. Review of candidate files will begin January 22, 2007 and continue until a suitable candidate is identified.

Inquiries: Dr. Earl Kline, Professor and Search Committee Chair
Department of Wood Science and Forest Products
College of Natural Resources, Virginia Tech – Brooks Forest Products Center (0503),
Blacksburg, VA 24061
Phone 540-231-8841 or email kline@vt.edu

[<Back>](#)

ASSISTANT/ASSOCIATE PROFESSOR OF FOREST OPERATIONS UNIVERSITY OF IDAHO

The University of Idaho is seeking a new faculty member to contribute to teaching, research and outreach that focuses on activities related to sustainable management of western forests and rangelands. The individual hired into this position will integrate sustainable land management objectives with prescriptive activities that address a broad array of ecosystem goods and services. Completed Ph.D. with at least one degree in forest engineering and operations or a related discipline, ability to compete for external funding, and evidence of interest in and ability to teach undergraduate courses in forest operations is required.

For complete description and to apply online, visit www.hr.uidaho.edu (Announcement #10000062489) by 3/1/07.
AA/EOE

Thanks a lot!

Jan Pitkin
Administrative Assistant II
Department of Forest Products
University of Idaho
PO Box 441132
Moscow, ID 83844-1132
Phone: 208-885-9663
Fax: 208-885-6226
<http://www.cnrhome.uidaho.edu/forp/>

[<Back>](#)

ELECTRON MICROSCOPY INSTRUCTIONAL SUPPORT SPECIALIST SUNY COLLEGE OF ENVIRONMENTAL SCIENCE AND FORESTRY

This is a full-time, 12-month appointment in the N.C. Brown Center for Ultrastructure Studies, a central microscopy facility at the SUNY College of Environmental Science and Forestry, Syracuse, NY. The center is equipped to provide students, faculty, and research staff with access to modern microscopy techniques. Duties include: maintenance of instruments, assisting in providing instruction on specimen preparation and equipment operation, imaging and analysis, photographic services, and assisting in general support and consultation for faculty, staff, students, and other clients. For more information about the position, the program, qualifications and how to apply, please see our full position description at www.esf.edu/hr/search/. SUNY-ESF is an Equal Opportunity/Affirmative Action employer.

Susan E. Anagnost
Interim Chair and Associate Professor
Construction Management and Wood Products Engineering
SUNY College of Environmental Science and Forestry
153 Baker Laboratory
1 Forestry Drive
Syracuse, New York 13210
Phone: (315) 470-6837; (315) 470-6880
Fax: (315) 470-6879

[<Back>](#)

PHD STUDENT POSITION AT WOOD COMPETENCE CENTRE UNIVERSITY OF NATURAL RESOURCES AND APPLIED LIFE SCIENCES, VIENNA

The Competence Centre for Wood composites and wood chemistry (Wood K plus AEWK Center; www.kplus-wood.at) is seeking a specialist in wood science and technology with strong interest in biomaterials, biomimetics and bioceramics for medical applications. The offered job is within a starting European project names TEMPLANT ("New Bio-ceramization processes applied to vegetable hierarchical structures"). The successful candidate will work within the "*Green Composite Research Group*" at IFA Tulln (<http://www.ifa-tulln.boku.ac.at/>), a research facility at Tulln, close to Vienna with a over 100 faculty, staff and students who conduct contract research with a variety of public and private entities developing biotechnologies, bio-based materials, analytical techniques, and bioenergy conversion.

PURPOSE: Coordinate, manage, and conduct research in plant selection for bioceramics, find proper conversion technologies, understand and model biomechanical and technological relationships, assist project partner with wood technological expertise, characterize microstructure, apply nanoindentation and other advanced methods.

ESSENTIAL DUTIES/RESPONSIBILITIES: Participate also in accompanying projects of the “Green composite Group”, attract new projects and grant work, draft proposals, supervise Research Associate, undergraduate students and staff. Write science papers and give presentations. Participate in general activities of the Competence Center and identify with its vision.

KNOWLEDGE AND SKILL QUALIFICATIONS: Diploma / Master in Wood Science and Technology, Polymer Science, Materials Science, or Biology with expressed Material Science interest, or any other related discipline. Experience in wood technological processes, polymer processing, composite materials; hands-on experience with mechanical testing, thermal analysis, wood and wood composites manufacturing is requested. Good organizational, written and oral communication skills; demonstrated judgment while working under pressure to meet constant deadlines; ability to work independently as well as in a team environment is required.

SALARY: The salary for this position is €30,150 per anno (as recommended by the Austrian Science Fund; see http://www.fwf.ac.at/de/projects/personalkostensaetze_2006.html; includes benefits) but may vary slightly depending upon qualifications.

APPLICATIONS: There will be a continuous review process, starting November 1, 2006. Send a cover letter, your curriculum vitae, and names, addresses and phone numbers of at least two references to

Professor Dr. Rupert Wimmer
Department for Agrobiotechnology
University of Natural Resources and Applied Life Sciences,
Institute for Natural Materials / Green Composite Group
Konrad Lorenz Strasse 20
A-3430 Tulln, Austria
Fax +43/2272/66280/303
e-mail: Rupert.Wimmer@boku.ac.at
www.ifa-tulln.ac.at/
Enquiries and questions should be also directed to Prof. Wimmer !

[<Back>](#)

PROJECT MANAGER - PULP & PAPER INDUSTRY

Location: AUSTRALIA

Job Opening: PULP & PAPER: PROJECT MANAGER / ENGINEER

Description of opening:

Global Leader in Packaging Solutions
Internationally Competitive Remuneration Package
Australian Major Project
Salary Range: \$175,000-\$195,000 per year plus benefits 2-year project with opportunity for full-time employment
Our Client is a leading global packaging manufacturer, operating in 34 countries generating sales of some US\$8½ billion. With a broad product offering, the company is dedicated to providing innovative cutting edge products and services to its customers.

An exciting new opportunity has created the need for a Project Manager to join them to oversee the construction and delivery of a new manufacturing facility located in Australia. Position runs WHOLE project, engineering, construction, purchasing, commissioning, first phase production. Reports at Board level. Site is existing board / liner mill. Project will include the removal of two old machines to be replaced with one new one.

The plant in question located at Botany Bay, which is in the Sydney metropolitan area, New South Wales (South East corner of Australia). New installation will have a production equipment will exceed that of the two machines it replaces. Output from this mill, as others, then goes to their various packaging and box manufacturing plants around the country. The name of the company will be revealed when resume is approved for submission and the candidate signs a confidentiality agreement.

Candidates must have a successful track record of managing similar projects within a world class framework with an installed value of about US\$230 Million. You will manage a project team highly skilled in sophisticated and complex specialist Pulp & Paper Industry machinery and process equipment. In this senior management position you will be charged with total responsibility to bring the project from grass roots to production within critical KPI's, particularly financial, time and production efficiency. Demonstrably pro-active, you will need to be able to resolve and manage complex engineering construction issues through strategic inspirational leadership, superior team building, communication, interpersonal and negotiation skills while being commercially and operationally astute. The idea candidate will have similar installation experience of this magnitude multi times in his or her career.

Holding appropriate tertiary qualifications you will be expected to bring total commitment to the project. An initial two-year contract is envisaged, with the possibility of an extension to three years and the further possibility of a permanent appointment within the global framework.

A generous internationally attractive remuneration and compensation package as befits a senior management position of this stature is available. Applications from Candidates with appropriate experience gained from outside of the Pulp & Paper Industry are also particularly encouraged to apply.

Send details and level of interest to my attention.

Michael Edwards, CEO
careermatch@inbox.com

[<Back>](#)

**VALUE-ADDED WOOD PRODUCTS EXTENSION ASSOCIATE (100% EXTENSION)
LSU AGCENTER**

Location: Louisiana Forest Products Development Center, School of Renewable Natural Resources, Louisiana State University Agricultural Center, Baton Rouge, Louisiana.

Description: This position will be 100 percent extension in support of the mission of the Louisiana Forest Products Development Center (LFPDC). Duties include 1) Developing a value-added wood products manufacturing extension program, 2) Leading in the technology transfer of research in utilization of traditional wood products and innovative new products and processes to the value-added industry, and 3) Organizing and conducting workshops, seminars and continuing education programs for value-added wood products industries in Louisiana. Value-added products include, but are not limited to, furniture, flooring, cabinets, moulding, millwork and engineered wood products. This position will focus on assisting manufacturers based on in-depth knowledge of solid wood and wood-based materials.

Qualifications: Required qualifications are a M.S. in wood science, value-added wood products manufacturing or related area. Excellent communications skills, written and oral, and the ability to develop and present educational programs in field and classroom settings are also required. Industry experience is desirable.

Justification: Value-added wood products industries are undergoing rapid change in order to grow and compete with manufacturers based in low-cost-of-production countries. These changes focus on decreasing costs through improved manufacturing processes, product engineering, shortening design-manufacture cycles through advanced and flexible manufacturing technologies, increasing product quality, improving

service, shortening delivery times, etc. Implementation of these changes is paramount for the value-added forest products industry in Louisiana, and this position is an integral part of the increased outreach activities by the LSU AgCenter and the LFPDC.

Salary and benefits: Salary will be commensurate with qualifications and experience. Benefits include retirement, university holidays, earned annual and sick leave, and optional group medical, life and supplemental insurances.

Application Deadline: February 1, 2007 or until suitable candidate is selected.

Application: Send a letter of application, statement concerning extension plans, curriculum vitae, selected reprints and/or examples of extension scholarship (<6), and a list of 4 references; we will ask finalists to submit letters of recommendation later.

Dr. Richard Vlosky
Search Committee Chair
Louisiana Forest Products Development Center
School of Renewable Natural Resources
227 Renewable Natural Resources Bldg.
Louisiana State University Agricultural Center
Baton Rouge, Louisiana 70803
225-578-4527
rvlosky@agcenter.lsu.edu
Website: www.rnr.lsu.edu/lfpdc/

[<Back>](#)

**DEVELOPMENT OF ENGINEERED WOOD PRODUCTS FROM DECOMMISSIONED
PRESERVATIVE-TREATED WOOD
ASSISTANT PROFESSOR (100% RESEARCH) - LSU AGCENTER**

LOCATION: Calhoun Research Station, Calhoun, Louisiana, Louisiana Agricultural Experiment Station, Louisiana State University Agricultural Center.

QUALIFICATIONS: Ph.D. in Wood Science, Wood Engineering, Civil Engineering or a closely related field. Preference given to those with research experience in the field of finite element analysis of novel engineered wood structures. Familiarity with topics including development of novel engineered wood products from decommissioned preservative-treated wood waste, adhesion of preservative-treated wood, wood composites, and heat transfer during hot pressing of composite panels is highly desirable. We seek a candidate with some technical experience in developing and conducting research in the aforementioned areas. The successful applicant will be encouraged to interact with faculty at the LSU AgCenter, Louisiana Forest Products Development Center, School of Renewable Natural Resources and Louisiana Tech University and other colleagues and stakeholders as appropriate. Applicants should be able to work effectively with industry groups and must be capable of communicating effectively with diverse audiences.

NATURE OF WORK: Responsibilities will involve development of an externally funded research program dealing with the development of novel engineered wood products from decommissioned preservative-treated wood. Candidate must develop and obtain research grants, conduct original and innovative research, publish findings in a variety of outlets. The successful candidate will be encouraged to advise graduate students and conduct collaborative research with colleagues. Service to local, state, national, and international clientele is expected.

SALARY AND BENEFITS: Salary will be commensurate with qualifications and experience. Benefits include retirement, university holidays, earned annual and sick leave, and optional group medical, life and supplemental insurances.

APPLICATION DEADLINE: November 15, 2005 or until suitable candidate is selected.

APPLICATION: Send a letter of application, statement concerning research plans, curriculum vitae, and selected reprints (<6); we will ask finalists to submit letters later.

Dr. Todd F. Shupe
Search Committee Chair
Louisiana Forest Products Development Center
School of Renewable Natural Resources
227 Renewable Natural Resources Bldg.
Louisiana State University Agricultural Center
Baton Rouge, Louisiana 70803
225-578-6432
Tshupe@agctr.lsu.edu
<http://www.lsuagcenter.com/>

[<Back>](#)

POSTDOCTORAL RESEARCH FELLOWSHIP IN FIBRE-BASED COMPOSITES

A highly motivated postdoctoral candidate is sought to embark on a three-year research project. The project aims at utilizing non-conventional fibre resources for fibre-based panel manufacturing. The postdoctoral candidate will be focused on developing chemical/biochemical treatment and processing techniques to enhance the panel adhesion ability and selected properties. The candidates should have strong background in chemical engineering, wood/fibre chemistry, bio-composites or related fields. The successful candidate must have research experience in composite products and proven ability to undertake innovative research independently and publish research results. The Fellowship is available for one year with a possibility of renewal.

Qualified candidates are invited to send their CVs to

Dr. S.Y. (Tony) Zhang (Tony.Zhang@qc.forintek.ca)
Dr. James Deng (James.Deng@qc.forintek.ca)
Dr. Xiang-Ming Wang (xiang-ming.wang@qc.forintek.ca)
Forintek Canada Corp.
319, rue Franquet
Quebec City, Quebec G1P 4R4
Canada
Tel: (418) 659 2647
Fax: (418)-659 2922
Website: www.forintek.ca

[<Back>](#)

FALL SWST BOARD MEETING



An SWST Board meeting was held in Boulder, Co on November 4th. The following are some notes from that meeting:

- The accreditation committee voted to approve the annual reports from NC State University and SUNY
- The membership committee is taking steps to try to convince student members to become full members
- The publication policies committee is pursuing making Wood & Fiber Science an online journal
- SWST is involved in the planning of the *Wood Products Research Workshop - Wood Products Research R&D Agenda for the 21st Century*
- The board decided to make a donation to the Temperate Forest Foundation to continue its education work
- The SWST vision, mission and objectives were updated as follows:

VISION: Be the world leader in advancing the profession of wood science.

MISSION: Provide service to SWST members; develop, maintain, and promulgate the educational, scientific, and ethical standards that define the profession; advocate the socially responsible production and use of wood and lignocellulosic materials.

SOCIETY OBJECTIVES:

1. Developing and maintaining the unique body of knowledge distinctive to wood science, lignocellulosic materials, and their technologies
2. Encouraging the communication and use of this knowledge.
3. Encouraging policies and procedures which assure the wise use of wood and lignocellulosic materials.
4. Encouraging high standards for professional performance of wood scientists and technologists and acting as the professional organization for individuals who meet these standards
5. Fostering education programs at all levels of wood science, lignocellulosic materials, and their technologies and furthering the quality of such programs.

[<Back>](#)

SWST SNAPSHOT

Membership as of November 1, 2006			
Full members	292	Affiliate members	4
Student members	65	Total members	408
Retired members	46	W&FS Subscribers	223
Financial			
Three Vanguard funds (12/31/05)	\$106,843.83	Vanguard Index fund (Student poster money)	\$15,637.93
CD Balance (12/31/05)	\$52,627.93	Checking Account (06/01/06)	\$111,621.70

[<Back>](#)

ABOUT SWST

The SWST Newsletter is published six times a year by the Society of Wood Science and Technology, One Gifford Pinchot Drive, Madison, WI 53705, USA.

Items for the Newsletter may be sent to Adam Taylor, at: AdamTaylor@utk.edu

The Society of Wood Science and Technology is a technical and professional organization for scientists and engineers working in academia, government, consulting and the forest-products industries and is dedicated to providing education and expertise regarding better ways to use and produce wood products.

Phone: (608) 231-9347

Fax: (608) 231-9592

E-mail: vherian@fs.fed.us

Web site: <http://www.swst.org>

Society of Wood Science and Technology

President: Paul M. Smith
Past President: Audrey Zink-Sharp
President Elect: Douglas Gardner
Vice President: James P. Armstrong
Executive Director: Vicki L. Herian
Directors: Robert Beauregard (2006)
Jerry Winandy (2006)
Donald A. Bender (2007)
Alain Cloutier (2007)

Wood and Fiber Science

Editor: Geza Ifju
Associate Editor: Audrey Zink-Sharp
Editorial Assistant: Carol B. Ovens

[<Back>](#)

WOOD AND FIBER SCIENCE REPORT

The Executive Board of the Society of Wood Science and Technology at its June 2006 meeting in Newport Beach, CA made a decision to start a “double blind” review process, meaning that the authors’ names will not be revealed to the reviewers and, conversely, the reviewers’ identities will not be revealed to the authors. This process is used by most of the highly regarded scientific publications, and it may further improve the scientific quality of papers published in Wood and Fiber Science. This new policy took effect on July 1, 2006.

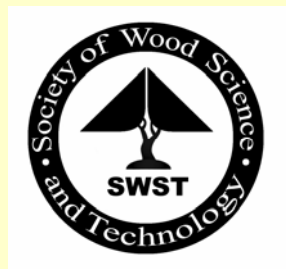
Summary of Publications, Volume 38

Issue	No. of article	No. of Pages
No. 1	18	181
No. 2	17	186
No. 3	17	187
No. 4	15	165 (est.)
TOTAL	67	719

Number of Manuscripts in the Process

Accepted beyond October issue	20	
Under Review	26	
Out to Authors for Revision		19
Withdrawn since July 1, 2006	8	
Rejected since July 1, 2006		4
Total in the Process		77

[<Back>](#)



2005-2006

LIST OF POTENTIAL SWST VISITING SCIENTISTS

ANDERSON, MATTHEW., 3700 RT. 44, Suite 102, Millbrook, NY 12545 (845-677-3091)
(FAX: 845-677-6547) email: m.anderson@verizon.net

Specialty: Wood science consulting and applied research.

Will Discuss Formally and Informally: Assessment of wood frame buildings (destructive and nondestructive); Evaluations of marine and foundation pilings; Investigation of construction related deficiencies; Microbiological evaluations (wood fungi, mold, bacteria).

ARMSTRONG, JAMES P., Associate Professor, West Virginia University, P.O. Box 6125,

Morgantown, WV 26506-6125 (304-293-2941, ext. 2486) (FAX: 304-293-2441)

email: jarmstro@wvu.edu

Specialty: Wood anatomy and physical properties; Contemporary issues in forest resources and the wood products industry.

Will Discuss Formally: Various topics related to forest resources in U.S. history (see: <http://www.wdsc.caf.wvu.edu/otherwebs/WDSC%20100.pdf>); Eco-terrorism--Its causes and impacts.

Will Discuss Informally: Any of the above; Education in WS&F; The enrollment problem in WS&T.

BABIAK, MARIAN, Professor, Dr.h.c. RNDr. PhD, Technical University in Zvolen, T.G.Masaryka 24, 96053 Zvolen, Slovak republic (+421 45 5206 350) (Fax: +421 45 5330027)

email address babiak@vsld.tuzvo.sk

Specialty: Wood Structure and Properties

Will Discuss Formally: Wood Physics and Mechanics

Will Discuss Informally: Wood – Water Relations; Rheology of Wood; Transport Processes in Wood.

BARNES, H. MICHAEL, Professor, Forest Products Laboratory, Mississippi State University,

Box 9820, Mississippi State, MS 39762-9820 (662-325-3056) (FAX: 662-325-8126)

email: mbarnes@cfr.msstate.edu

Specialty: Wood deterioration and preservation.

Will Discuss Formally and Informally: Wood science education; wood preservation.

Will Discuss Informally: Same as above.

BOWYER, JIM L., Professor, Department of Bio-based Products, University of Minnesota, 2004 Folwell Avenue, St. Paul, MN 55108 (612-624-4292) (FAX: 612-625-6286) email: jbowyer@umn.edu

Specialty: Environmental implications of biomaterials and bioenergy production and use.

Will Discuss Formally: Environmental aspects of forestry, timber harvest and wood use; The role of wood in the growing U.S. bio-energy industry; The Wood Science profession - Past, Present & Future; Environmental life cycle analysis; Life cycle inventory; Environmental education of children; The tropical deforestation problem.

Will Discuss Informally: Almost anything.

[<Back>](#)

BUSH, ROBERT, Professor, Dept. of Wood Science and Forest Products, Virginia Tech, Blacksburg, VA 20461-0323 (540-231-8834) (FAX 540-231-8176) email: rbush@vt.edu

Specialty: Forest products marketing and management

Will Discuss Formally: The marketing of forest products; Strategic planning and decision-making in wood-based industries; Forest products marketing research.

Will Discuss Informally: The above topics in addition to research to help improve student recruitment in Wood Science.

Bryant, Ben S., Professor Emeritus, CEO of Appropriate Technology Bricquettes, Inc. (ATBI). Seattle WA, (206-522-6273) email: atbi@comcast.net

Specialty: Wood science and physics.

Will Discuss Formally and Informally: Above specialty.

CHEN, ZHANGJING, 506 Alleghany Street, Blacksburg, VA 24060, (540-552-8592) email: chengo@vt.edu

Specialty: Wood drying.

Will Discuss Formally and Informally: Above specialty.

CHOW, POO, Professor of Wood Science, Department of Forestry, University of Illinois, W-503 Turner Hall, 1102 South Goodwin, Urbana, IL 61801 (217-333-6670) (FAX: 217-244-3219)

email: p-chow@unic.edu

Specialty: Physical, mechanical and chemical properties of wood-based materials.

Will Discuss Formally: Hardwood composites; Durability of wood for structural uses.

Will Discuss Informally: Durability of wood-base materials; Utilization of non-wood plant fiber.

COOPER, PAUL, Professor, Forestry Department, University of Toronto, 33 Willcocks Street, Toronto, Ontario, CANADA M5S 3B3

email: p.cooper@utoronto.ca

Specialty: Wood deterioration and protection.

Will Discuss Formally: Interaction with chemicals with the wood cell wall; CCA and Copper amine fixation; Environmental impacts of treated wood over the full life cycle; Recycling/reuse of treated wood.

Will Discuss Informally: Collaborative research; Graduate student recruitment; Teaching methods.

CUTTER, BRUCE, Professor, University of Missouri, 203 A-BNR, Columbia, MO 65211

(573-882-2744) (FAX: 573-882-1977) email: cutterb@missouri.edu

Specialty: Tree growth, wood quality.

Will Discuss Formally: General tree growth; Wood quality; Agroforestry; Fuel loading in oak-hickory forests.

Will Discuss Informally: Eastern red cedar as a biogeochemical monitor; General tree growth; Wood quality; Behavior of wood in fire situations; fire behavior.

[<Back>](#)

DeBONIS, A. L., President, Wood Advisory Services, Inc., P.O. Box 1322, Millbrook, NY 12545

(914-677-3091) (FAX: 914-677-6547)

Specialty: Wood engineering.

Will Discuss Formally and Informally: Design properties of lumber; Grading of structural lumber (visual and/or MSR); Reliability-based design; The role of consultants in the forest products field; Heavy timbers in residential and commercial construction; Hardwood structural lumber.

Elder, Thomas, Research Forest Products Technologist, USDA-Forest Service, Southern Research Station, 2500, Shreveport Highway, Pineville, Louisiana, 71360 (318-473-7008) (Fax: 318-473-7246) email: telder@fs.fed.us

Specialty: Wood chemistry.

Will Discuss Formally: Atomic force microscopy of wood and fiber surfaces; time-domain NMR of wood; fiber modification.

Will Discuss Informally: Molecular modeling of the chemical constituents of wood.

FLYNN, KEVIN, University of California Forest Products Lab., 1301 South 46th Street,

Richmond, CA 94804 (510-215-4242) (FAX: 510-215-4299) email: kevin.flynn@ucop.edu

Specialty: Wood performance; Problem analysis.

Will Discuss Formally: Durability; Degradation; Protection.

Will Discuss Informally: Any related issues.

FUNCK, JAMES W., Associate Professor, Oregon State University, Forest Products Department,

134 Richardson Hall, Corvallis, OR 97331-5751 (541-737-4207) (FAX: 541-737-3385)

email: Jim.Funck@orst.edu

Specialty: Optical and dielectric scanning for surface defects and roughness; Process modeling and simulation (lumber and plywood); Process control.

Will Discuss Formally: Above listed specialties.

Will Discuss Informally: Above listed specialties; Education - graduate and undergraduate.

GARDNER, DOUGLAS J., University of Maine, Advanced Engineered Wood

Composites Center, Department of Forest Management, 231 AEWB Building, Orono, ME 04469 (207-581-2846)

(FAX: 207-581-2074)

email: doug_gardner@umenfa.maine.edu

Specialty: Wood adhesion; Wood composites.

Will Discuss Formally: Wood adhesion; Wood surface chemistry; Wood/plastic Composites; Wood Science Education.

Will Discuss Informally: Anything.

LACHENBRUCH, BARBARA, Professor, Oregon State University, Dept. of Wood Science and Engineering, 118 Richardson Hall, Corvallis, OR 97331 (541-737-4213) (FAX: 541-737-3385)

email: Barbara.Lachenbruch@oregonstate.edu

Specialty: Wood quality/silviculture interactions; Tree physiology.

Will Discuss Formally: Effects of tree biology on wood quality; Tree water relations and biomechanics as related to xylem structure.

Will Discuss Informally: Dual-career, women and family issues in grad school and academics.

[<Back>](#)

GLASSER, WOLFGANG G., Professor of Wood Chemistry, Virginia Polytechnic Institute and State University, Department of Wood Science & Forest Products, 210 Cheatham Hall, Blacksburg, VA 24061 (540-231-4403) (FAX: 540-231-7664) email: wglasser@vt.edu

Specialty: Polymer and materials science aspects of forest products; Biobased materials from wood; Steam explosion.

Will Discuss Formally: Structure--property relationships of cellulose, xylan and lignin and their derivatives; Cellulosic thermoplastic polymers and composites; Lignin chemistry.

Will Discuss Informally: The Carbohydrate Economy: Technical, economic social .

GREEN, DAVID W., Engineer, Forest Products Laboratory, One Gifford Pinchot Drive, Madison, WI 53726 (608-271-9261) (FAX: 608-231-9592) email: dwgreen@fs.fed.us

Specialty: Engineering properties of wood.

Will Discuss Formally: In-grade testing of lumber; Effect of moisture content on lumber properties; Engineering properties of wood research at the U.S. FPL; Structural properties of hardwoods.

Will Discuss Informally: Almost anything; The research environment -industry vs. university vs. government.

GUPTA, RAKESH., Oregon State University, Department of Wood Science & Engineering, 114 RH, Corvallis, OR 97331 (541-737-4223) (FAX: 541-737-3305)

email: rakesh.gupta@oregonstate.edu

Specialty: Wood engineering/Mechanics; Mechanical properties/behavior of wood.

Will Discuss Formally: Above listed specialities.

Will Discuss Informally: Above listed specialities.

HAMMETT, A.L., Associate Professor, Dept. of Wood Science & Forest Products, Virginia Polytechnic and State University, 210 Cheatham Hall, Blacksburg, VA 24061-0323 (540-231-2716) (FAX: 540-231-8176) email: himal@vt.edu

Specialty: Forest products marketing.

Will Discuss Formally: International issues related to forestry and forest products.

JELLISON, JODY, Professor of Biology, University of Maine, 313 Hitchner Hall, Orono, ME 04469 (207-581-2995) email: jellison@umit.maine.edu

Specialty: Biodegradation of wood; Fungal metabolism.

Will Discuss Formally: Biological degradation of wood.

Will Discuss Informally: Interdisciplinary studies.

[<Back>](#)

KAMKE, FREDERICK A., JELD-WEN Professor of Wood-Based Composite Science, Dept. Wood Science and Engineering, Oregon State University, 104 Richardson Hall (541-737-8422)(FAX: 541-737-3385) email:fred.kamke@oregonstate.edu

Specialty: Wood-based and composites.

Will Discuss Formally: Heat and mass transfer during hot-pressing; adhesive penetration and distribution.

Will Discuss Informally: Composite processing and performance.

(Newly added) Kasal, Bo, Professor and Hankin Chair, Department of Civil and Environmental Engineering, Department of Architectural Engineering, Director of Research, Pennsylvania Housing Research Center, 219 Sackett Building, University Park, PA 16802 (814 865 2341) (Fax: 814 863 7304) email: buk13@psu.edu

Specialty: Residential construction; Wood engineering.

Will Discuss Formally: Residential structures in natural disasters; in-situ evaluation of historic wood buildings; performance of laminated wood frames in earthquakes.

KIM, MOON J., Department of Forest Products, Mississippi State University, Mississippi State, MS 39762-9820 (662-325-3109) (FAX: 662-325-8126) email: mkim@cfr.msstate.edu

Specialty: Wood Adhesives; UF resins; PF resins, PRF resins.

Will Discuss Formally and Informally: Above specialty.

KODZI Jr, EMMANUEL T., PhD. CANDIDATE, PURDUE UNIVERSITY, 175 MARSTELLAR ST., WEST LAFAYETTE, IN 47907 (765-496-6127) (Fax: 765-496-1344) email: ekodzi@purdue.edu

Specialty: MASS CUSTOMIZATION IN FURNITURE MANUFACTURING COMPANIES.

Will Discuss Formally: Linkages between Mass Customization and Competitiveness.

Will Discuss Informally: Critical Enablers of Mass Customization for Wooden Furniture Manufacturing Scenarios.

LITTLE, ROBERT L., Ph.D., R.F. Senior Project Manager, Weyerhaeuser Company. Wood Science and Engineering R&D Mail Stop: WTC 2B2 P.O. Box 9777 Federal Way, WA 98063-9777 Office: (253)924-4269 Mobile: (336)404-2132

Specialty: Drying of hardwood lumber.

Will Discuss Formally: Automated control of hardwood dry kilns, Control of corrosion in dry kiln buildings, General drying practices for hardwood lumber, and Kiln design considerations.

Will Discuss Informally: General wood technology.

LOFERSKI, JOSEPH R., Associate Professor, Virginia Polytechnic Institute and State University, Department of Wood Science and Forest Products, Brooks Forest Products Center, Blacksburg, VA 24061-0503 (540-231-4405) (FAX: 540-231-8868)

Specialty: Wood engineering, Design of wood structures, Long-term performance of buildings, Historic buildings

Will Discuss Formally or Informally: Preservation of historic wood structures; Long-term performance of wood structures; Building systems; Deterioration of wood building materials.

[<Back>](#)

MATER, JEAN Dr., Vice President, Forest Products Marketing Division, Mater Engineering, 101 SW Western Blvd., Corvallis, OR 97333 (541-753-7335) (FAX 541-752-2952) email: Mater@mater.com

Specialty: Marketing forest industry policies; Forestry relations to public; Forest industry trends; Coordination of marketing and production; Forest industry and environment; Certification problems and opportunities.

Will Discuss Formally: All of the above.

Will Discuss Informally: Role of women in forest industry; Changing role of NIPFs.

McLAIN, THOMAS E., Professor and Department Head, Department of Wood Science & Engineering, Oregon State University, 119 Richardson Hall, Corvallis, OR 97331-5751 (541-737-4224); <http://woodscience.oregonstate.edu> (FAX: 541-737-3385) email: Thomas.McLain@oregonstate.edu

Specialty: Role of wood in a global economy; SWST Accreditation Standards; strategic planning for forest products/wood science programs; academic, extension and research program administration challenges.
Will Discuss Formally: Recruiting students into WST programs; Introductory courses in FP/WST; SWST Accreditation Standards; The changing roles of wood in modern society; Integrating extension into a research and teaching program; Pacific Northwest forest conflicts.
Will Discuss Informally: Above topics and most anything else.

MORRELL, JEFFREY J., Professor, Department of Forest Products, 230 Richardson Hall, Oregon State University, Corvallis, OR 97331-5751 (541-7737-4222) (FAX: 541-737-3385) email: Jeff.Morrell@oregonstate.edu

Specialty: Wood microbiology; Biodeterioration; Preservation.
Will Discuss Formally: Remedial control of decay in wood structures; Proper use of wood in adverse environments; OSU's cooperative pole research program.
Will Discuss Informally: Biodeterioration and biological interactions; Treatability of refractory wood species.

No, Byung Young, PhD, Resin Chemist, Hexion Specialty Chemicals, Inc. R&D lab, 610 south 2nd street, Springfield, OR 97477 (541-741-6663) (Fax: 541-747-3868) email: Byung.YoungNo@hexionchem.com

Specialty: UF and MUF resins for wood-based composite.
Will Discuss Formally: Hydrolysis resistant UF and MUF resins for particleboard and medium-density fiberboard.
Will Discuss Informally: UF and MUF resins for wood-based composites.

O'HALLORAN, MICHAEL R., President, Western Wood Products Association, 522 SW 5th Street, Suite 500, Portland, OR 97204-2122 (503-224-3930) email: mohalloran@wwpa.org

Specialty: Wood engineering, mechanics, wood structures, codes, standards, research management.
Will Discuss Formally: Structural panel industry (Plywood, OSB, waferboard) status, markets, uses, standards, engineering design, LRFD design; Glued laminated timber; Structural composite lumber.
Will Discuss Informally: Trade associations; Structural panel topics; International markets; above topics.

[<Back>](#)

PATTERSON, DAVID W., Research Professor, Forest Products Utilization, Arkansas Forest Resources Center, P.O. Box 3468, Monticello, AR 71656 (870-460-1652) (FAX 870-460-1092) email: pattersond@uamont.edu

Specialty: Tree weights, Bulk Density, Small Log Utilization
Will Discuss Formally: Bulk Density Studies, Weight Scaling Factors, Inside Out Beams, Open Web Beams, Tree Growth and Wood Quality
Will Discuss Informally: Trip to Russia, 3 Trips to Guinea in West Africa, Old War Stories

RICE, WILLIAM W., Professor of Wood Science and Technology (retired), 137 Pine Street, Amherst, MA 01002 (413-549-0795) (FAX: 413-549-8010) email: wrice@forwild.umass.edu

Specialty: Wood drying; Wood machining.
Will Discuss Formally: Quality control - log to rough mill; Predriers, kiln equipment and operation.
Will Discuss Informally: Wood technology program; Extension activities; New England Kiln Drying Association.

ROSS, ROBERT J., Supervisory Research Engineer, Forest Products Laboratory, One Gifford Pinchot Drive, Madison, WI 53726 (608-231-9221) (FAX: 608-231-9592) email: rjross@fs.fed.us

Specialty: Wood engineering, nondestructive testing, structural composite
Will Discuss Formally: Nondestructive testing; Structural composites; Wood engineering.
Will Discuss Informally: Vitality of SWST and wood engineering; Educating wood engineers for the industry.

SHALER, STEPHEN, Professor, University of Maine, 5755 Nutting Hall, Orono, ME 04469-5755 (207-581-2886) (FAX: 207-581-2875) email: Steve.Shaler@umit.maine.edu

Specialty: Wood mechanics and composites.

Will Discuss Formally: Wood fiber properties; Computer and imaging applications; Experimental mechanics.

Will Discuss Informally: Hybrid wood composites.

SHI, SHELDON QIANG, Assistant Professor, Box 9820, Mississippi State, MS 39762-9820 (662-325-3110) (FAX: 662-325-8126) email: sshi@cfr.msstate.edu

Specialty: Wood (Wood-plastics) composites, wood adhesion, moisture related properties of wood and wood composites.

Will Discuss Formally: Recycling of polymer fluff in wood composites; Contact angle determination of particles.

Will Discuss Informally: Moisture related properties of wood composites; Student recruitment issue.

[<Back>](#)

SMITH, BOB, Associate Professor/Extension Specialist, Virginia Tech, 1650 Ramble Road, Mailcode 0503, Blacksburg, VA 24061 (540-231-5876) (FAX 540-231-8868) email: rsmith4@vt.edu

Specialty: Forest products marketing; Professional sales in the forest products industry; Markets for wood in the U.S. infrastructure; Markets and perceptions of timber by engineers.

Will Discuss Formally: Marketing forest production; Perceptions of wood in the U.S. infrastructure; Educational needs in the forest products industry.

Will Discuss Informally: Timber bridges; Wood science and forest products at VPI; The Center for Forest Products Marketing and Management.

SMITH, W. RAMSAY, Global Research Manager, Arch Wood Protection, Inc., 3941 Bonsal Road, Conley, GA 30288 (404-362-3970) (FAX: 404-363-8585) email: wrsmith@archchemicals.com

Specialty: International trade in forest products; Hardwood exports; Wood quality influences on product acceptance in foreign markets.

Will Discuss Informally: Graduate programs in wood science and in international trade; Views of the future of the forest products industry; other topics as desired.

SMULSKI, STEPHEN, Ph.D., President, Wood Science Specialists, Inc., 453 Wendell Rd., Shutesbury, MA 01072 (413-259-1661) (FAX: 413-259-1610) email: woodsci@crocker.com

Specialty: In-service performance of wood and wood-base products in residential, commercial and industrial construction; Preventing degradation of wood in service.

Will Discuss Formally: Moisture problems and durability of wood-frame houses; Forensic application of wood science and technology

Will Discuss Informally: Consulting opportunities in wood science and technology; Career opportunities in wood science and technology.

TANG, R. C., Professor, School of Forestry, Auburn University, Auburn, AL 36849-5418 (334-844-1088) (FAX: 334-844-4221) email: tang@forestry.auburn.edu

Specialty: Mechanics and physics of wood and wood composites.

Will Discuss Formally: Long-term performance of wood composite structures; Creep models of wood composites under various environmental conditions; Elastic behavior of wood fibers; Dimensional stability and engineering reliability of wood composite structures; Duration of load behavior of lumber under changing environments; Effect of flake-cutting pattern and resin content on the mechanical and physical properties of flakeboard.

Will Discuss Informally: Undergraduate and graduate programs in forest products and wood science at Auburn; Mathematical models and simulation in forest and wood science.

[<Back>](#)

TEKLEYOHANNES, Anteneh Tesfaye, University of British Columbia, Dept. of Wood Science, 2424 Main Mall, Vancouver, BC, CANADA V6T 1Z4 (604-822-8203) (FAX: 604-822-9195)
email: anteneht@interchange.ubc.ca

Specialty: Wood products engineering--basic wood processing, Sawmilling; Drying and preservation; Composite materials and furniture.

Will Discuss Formally: Environmental aspects of wood products; Sawmilling; hydrothermal treatment of wood; and wood composite materials technology.

VLOSKY, RICHARD P., Ph.D., FIWSc., Director, Louisiana Forest Products Development Center and Professor, Forest Products Marketing School of Renewable Natural Resources, Louisiana State University Agricultural Center, Baton Rouge, LA 70803. Phone: (225) 578-4527; Fax: (225) 578-4251; Cell: (225) 223-1931; Email: vlosky@lsu.edu; URL: www.rnr.lsu.edu/lfpdc

Specialty: Marketing; Forest Sector-Based Economic development.

Will Discuss Formally: Marketing Principles, Domestic and international wood products marketing and business development; Technology applications to improve business competitiveness; eBusiness, eCommerce; Marketing applications to economic development; Environmental certification and marketing; Value-added product opportunities.

WANG, XIPING, USDA Forest Service, Forest Products Laboratory, 1 Gifford Pinchot Drive, Madison, WI 53726-2398 (608-231-9461) (FAX: 608-231-9508) email: xwang@fs.fed.us

Specialty: Nondestructive evaluation (NDE) of wood; NDE of wood structural members/systems; Wood drying.

Will Discuss Formally: NDE of trees, logs, lumber; NDE of structural members/systems.

Will Discuss Informally: Dry kiln control.

WIEDENBECK, JANICE K., Project Leader, USDA Forest Service, Northeastern Forest Experiment Station, 241 Mercer Springs Road, Princeton, WV 24740 (304-431-2708)
(FAX: 304-431-2772) email: jwiedenbeck@fs.fed.us

Specialty: Secondary wood products processing; Manufacturing system simulation modeling; Production control.

Will Discuss Formally: Research pursuits and accomplishments of Princeton WV's work unit "Improved Processing Technology for Hardwoods" including gang-rip-first research and application programs; Rough mill simulation models; Yield improvement research; New hardwood lumber processing systems and technologies, etc.

WINANDY, JERROLD, Project Leader-Engineered composites. USDA Forest Service, Forest Products Laboratory, One Gifford Pinchot Dr., Madison, WI 53726-2398 (608-231-9316)
(FAX: 608-231-9582) email: jwinandy@wisc.edu

Specialty: Engineered wood composites; Durability; Composites as tool for sustainable forestry.

Will Discuss Formally: Composites; Preservation; Property effects; Enhancing durability.

Will Discuss Informally: Standards; Codes; Physical/mechanical properties.

[<Back>](#)

Wolcott, Michael P., Professor, Wood Materials and Engineering Lab, Civil and Environmental Engineering, Washington State University, Pullman, WA 99164-1806 (509.335.6392) (Fax: 509.335.5077)

Specialty: Wood-based composite materials; viscoelasticity; adhesion.

Will discuss formally: Composites design, manufacture, and application; Bioproducts and Nanotechnology in the

wood industry.

Will discuss informally: Commercial developments; Building products trends; Adhesion.

Yadama, Vikram, Asst. Professor, Wood Materials and Engineering Lab, Civil and Environmental Engineering, Washington State University, Pullman, WA 99164-1806 (509.335.6261) (Fax: 509.335.5077), vyadama@wsu.edu

Specialty: Wood-based composite materials; viscoelasticity; adhesion.

Will discuss formally: Wood engineering and design, composites and their applications.

Will discuss informally: Building developments and construction technology.

YAN, NING., Assistant Professor, University of Toronto, Faculty of Forestry, 33 Wilcocks St., Toronto, Ontario CANADA M5S 3B3 (416-946-8070) (FAX: 416-978-3834)

email: ning.yan@utoronto.ca

Specialty: Material science.

Will Discuss Formally: Wood composites performance; Adhesive-wood interactions; Wood/natural fiber plastic composites; Pulp and paper.

Will Discuss Informally: Durability and weathering of forest products.

ZERBE, JOHN I., 3310 Heatherdell Lane, Madison, WI 53713 (608-274-0714)

Specialty: Wood as a source of energy and petrochemical substitutes; Use of wood to combat global climate change.

Will Discuss Formally: Conversion of wood to improved fuels; Wood as a raw material for alcohol production; Reduction of atmospheric carbon dioxide through wood utilization by conservation, sequestration and substitution.

Will Discuss Informally: History of the forest resource as a source of fuel; Current thinking on wood as a source of energy; Impact of energy usage on the future of our economy; Impacts of atmospheric carbon dioxide increase.

Zhang, Jilei, Associate Professor, Forest Products Laboratory, Mississippi State University, Box 9820, Mississippi State, MS 39762 (662-325-9413)

(FAX: 662-325-8126) email: jzhang@cfr.msstate.edu

Specialty: Furniture engineering.

Will Discuss Formally: Strength design of furniture; furniture performance tests and standards; evaluation of wood and wood composites as furniture stock; computer-aided to furniture design and structural analysis.

Will Discuss Informally: Computer-aided to furniture design, analysis, and manufacture; furniture package design and testing; nondestructive evaluation of furniture structural performance.